

FMCZ

Filtro cartucho compacto para coleta de particulados e poeiras combustíveis, em diversos segmentos industriais.



FMCZ





- ✓ Os cartuchos estão disponíveis em diferentes materiais, para atender às mais diversas aplicações e tipos de particulados.
- ✓ Seu desenho modular permite instalação próximo à fonte de emissão do poluente, reduzindo o consumo de energia.
- ✓ Os elementos filtrantes são de fácil acesso e de simples troca.
- ✓ Intelligent ECO-efficient filter controller minimize maintenance and energy costs.
- ✓ Quick release waste bin

A linha de filtros cartucho FMC oferece diversos benefícios operacionais graças a seu desenho compacto e ao sistema de limpeza UniClean®.


FM CZ

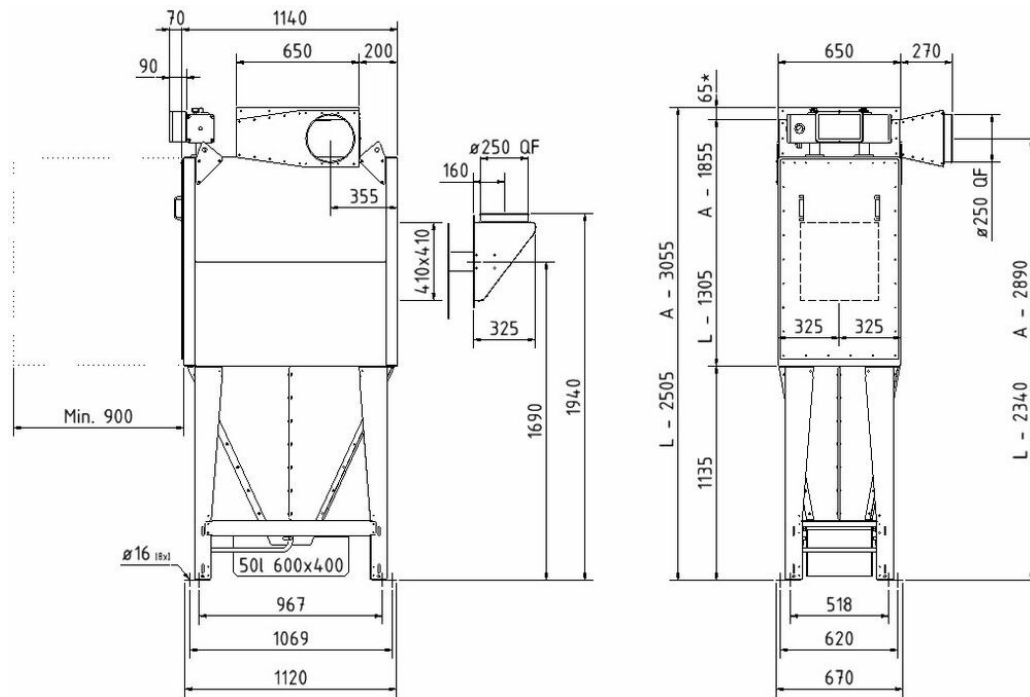
Certificações	CE, EX
AAdequado para poeiras combustíveis	True
Método de limpeza do filtro	Pulso de ar
[ProductApplication]	Fumos, Poeira

Models

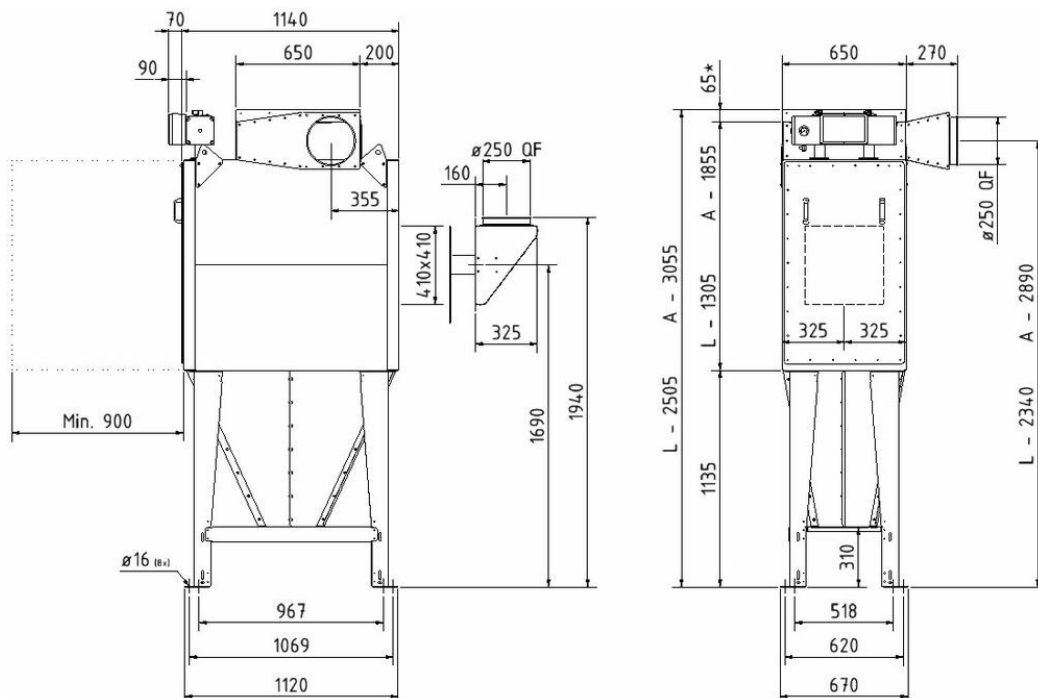
	Item number	Tipo de filtro	Número de elementos filtrantes
	FMC(Z)200-2Ls	Filtro de cassete	8
	FMC(Z)200-4Ls	Filtro de cassete	16
	FMC(Z)200-6Ls	Filtro de cassete	24
	FMC(Z)200-8Ls	Filtro de cassete	32
	FMC(Z)200-2As	Filtro de cassete	8
	FMC(Z)200-4As	Filtro de cassete	16
	FMC(Z)200-6As	Filtro de cassete	24
	FMC(Z)200-8As	Filtro de cassete	32

Accessories

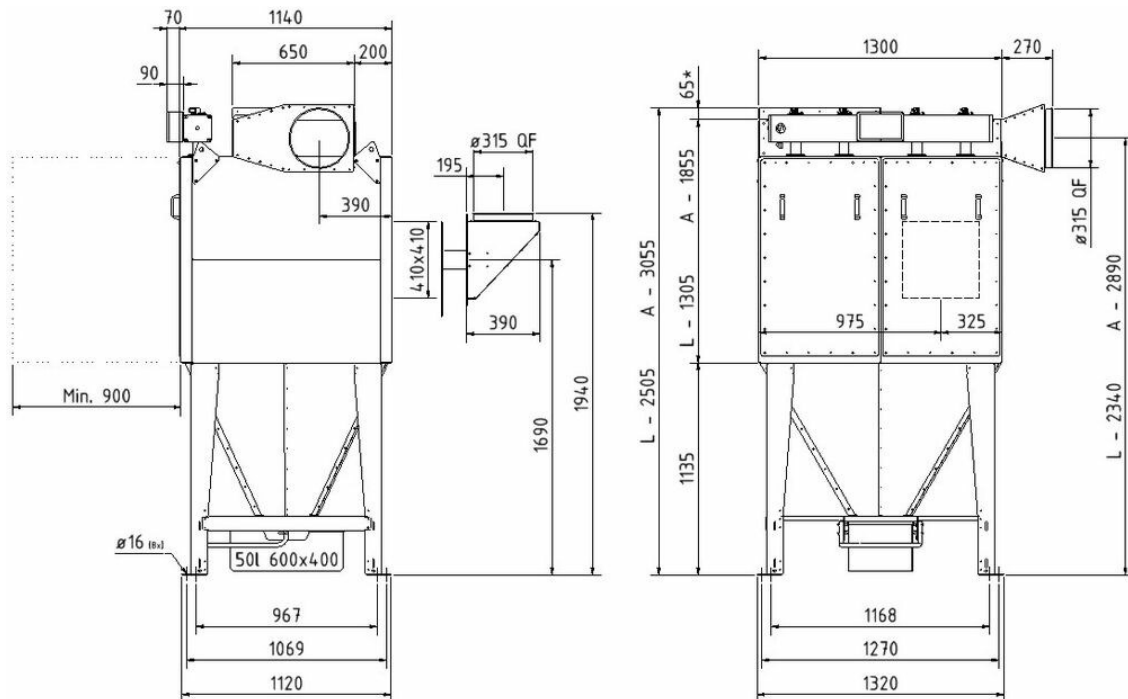
	Accessory	Item number
	Single backpack for 4 modules	5509660
	Single backpack for 8 modules round inlet from the top pos L	5501169
	Double backpack for 4 modules	5509661
	Isolation box for FM pressure tank, 2 modules	5501317
	Isolation box for FM pressure tank, 4 modules	5501318
	Isolation box for FM pressure tank, 6 modules	5501319
	Isolation box for FM pressure tank, 6 modules	5501320
	Noise enclosure for FM600 fan	5501783



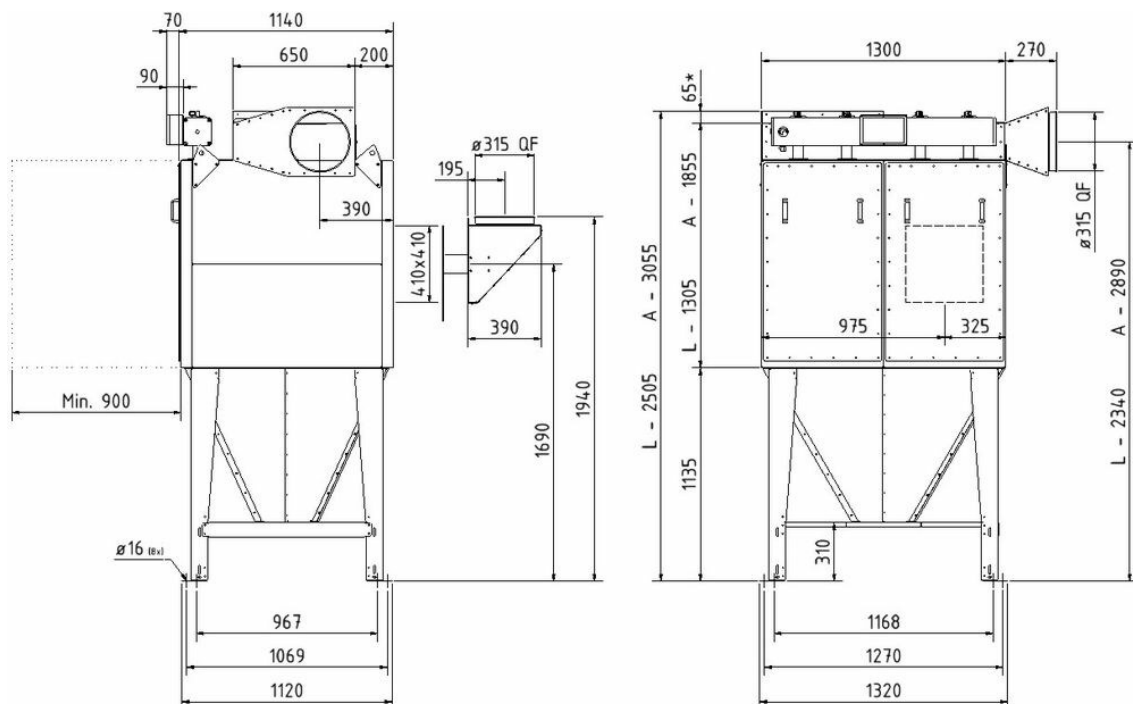
FMC200-2L and 2A with bin for discharge All dimensions in mm. If 50 liter bin with rollers, add 90 mm. * 65 mm to be included at top mounted fan.



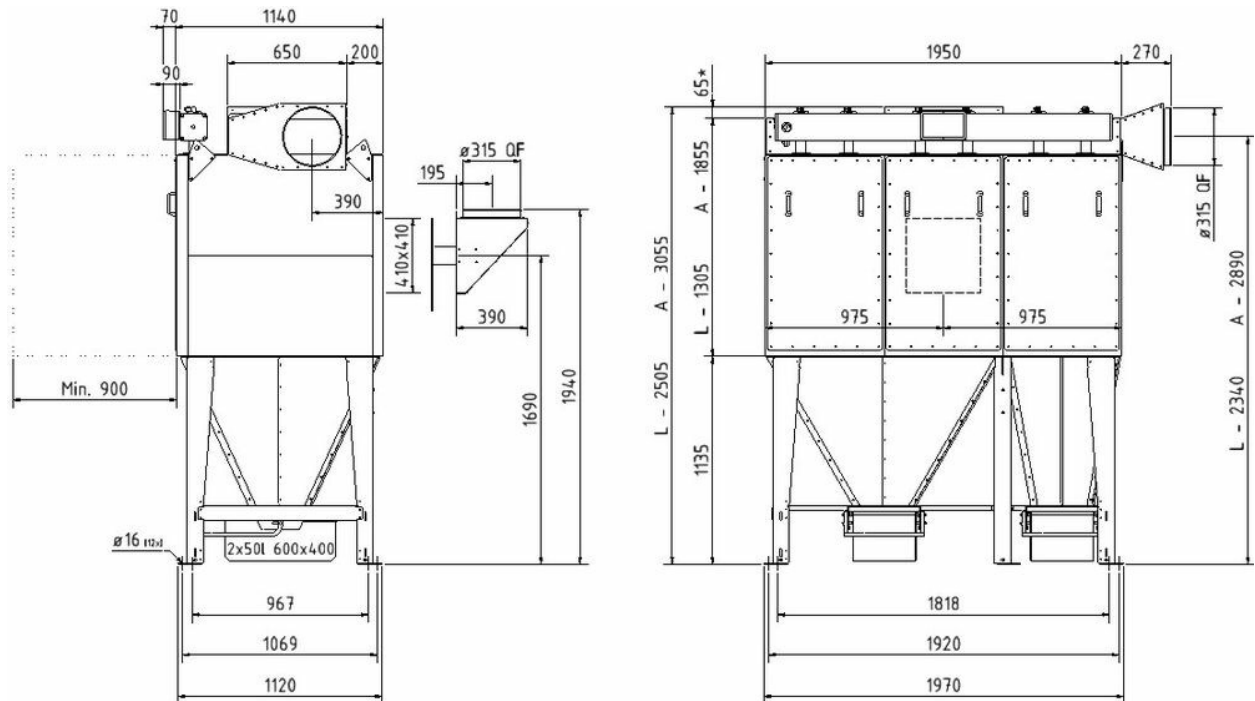
FMC200-2L and 2A hopper with flange for discharge All dimensions in mm. * 65 mm to be included at top mounted fan.



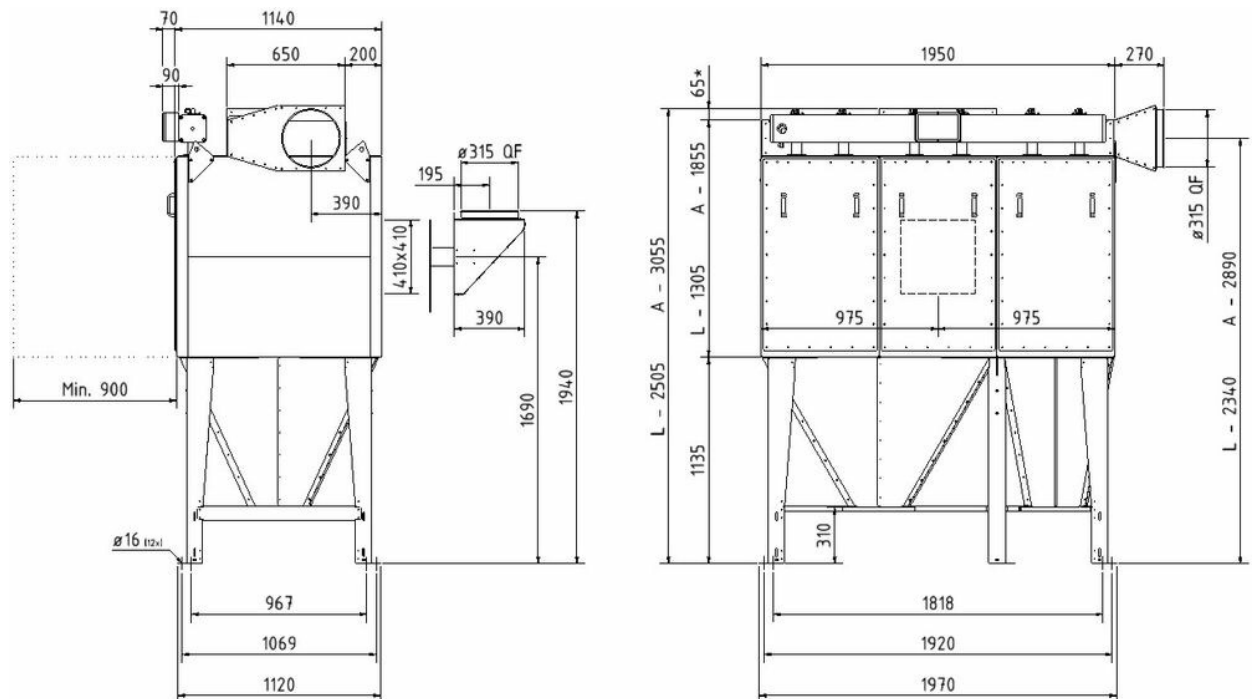
FMC200-4L and 4A with bin for discharge All dimensions in mm. If 50 liter bin with rollers, add 90 mm. * 65 mm to be included at top mounted fan.



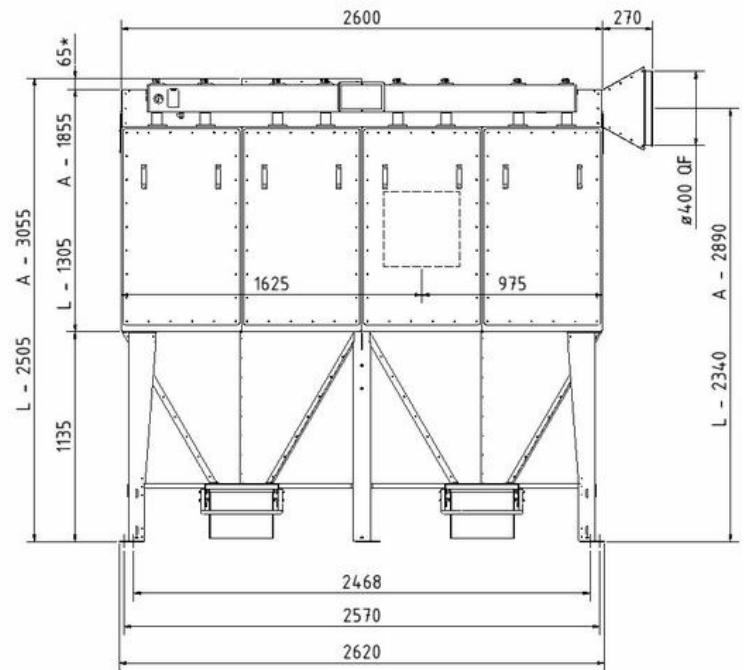
FMC200-4L and 4A hopper with flange for discharge All dimensions in mm. * 65 mm to be included at top mounted fan.



FMC200-6L and 6A with bin for discharge All dimensions in mm. If 50 liter bin with rollers, add 90 mm. * 65 mm to be included at top mounted fan.



FMC200-6L and 6A hopper with flange for discharge All dimensions in mm. * 65 mm to be included at top mounted fan



9/10

Type	Number of cartridges	Filter area in m ²	Max. air flow in m ³ /h*	Max. amount of ex. membranes	Max. Silo volume** St1 in m ³	Standard no. of ex. membranes Std.***	
FMCZ200-2L	8	32	3200	5	10	1	2
FMCZ200-4L	16	64	6400	7	15	2	2
FMCZ200-6L	24	96	9600	9	20	2	3
FMCZ200-8L	32	128	12800	11	25	2	3
FMCZ200-2A	8	53	5300	5	10	2	2
FMCZ200-4A	16	106	10600	7	15	2	2
FMCZ200-6A	24	159	15900	9	20	2	3
FMCZ200-8A	32	212	21200	11	25	2	3

* Max. Air flow is dependent on the actual dust type. ** Max. extra possible relieved volume (for St1 dust), when FMCZ200 silo version is mounted directly on a silo. (Attention: this is only an example with system L/D = 1, pred,max = 0,3 bar - special calculation is required for every case). Standard explosion vents 410x410. Filter body and hopper : St1, Kst = max.200 bar x m/s and Pmax = 9 bar. St2, Kst = max.300 bar x m/s and Pmax = 9 bar. St3, Kst = max.600 bar = special order. When ordering please specify: • Dust characteristics Kst and Pmax. • Zone-rating of place for installation (Non-zone or Zone 22) Marking • The St1 version is marked EX II D St1. • The FMCZ200 filter body in the St2 version is marked: EX II D St2. • The marking is based on product certification by FTZU No.

1026

